

Quality of your kitchen...



BELLAKS
KITCHEN AND FURNITURE ACCESSORIES





BELLAKS 2018 yılı başlarından itibaren mutfak ve mobilya aksesuarları sektöründe ihracat yaparak faaliyet göstermeye başlamıştır. Henüz yeni kurulan firmamız, geçmiş yılların vermiş olduğu müşteri portföyü ve ürün tecrübesiyle siz değerli müşterilerimize kaliteli hizmet ve akılcı çözümler sunmayı hedeflemektedir.

Kalite bir değerdir. Bu değerle müşteri memnuniyetini birleştirmek öncelikli hedefimiz olup, sizlerin desteğiyle hep beraber büyümeyi planlıyoruz.

MİSYON

Mutfak ve Mobilya aksesuarları sektöründe geniş ürün portföyü oluşturarak müşterilere farklı ve kaliteli alternatifleri sunmayı amaçlar.

VİZYON

Mutfak ve Mobilya Aksesuarlarında farklı yaratıcı çözümler sunarak hayatınıza fonksiyonel çözümler katmaktır



ABOUT US

BELLAKS has been operating since the beginning of 2018 by exporting kitchen and furniture accessories to different countries. Our newly established company aims to provide quality services and reasonable solutions to our valued customers with its customer portfolio and product experience that has been given in the past years.

Quality is a value. Combining value with customer satisfaction is our primary goal and we plan to grow together with your support.

MISSION

In kitchen and furniture accessories sector creating a wide product portfolio to offer customers different and high quality alternatives.

VISION

Providing functional solutions to your life by offering different creative solutions in kitchen and furniture accessories



1. Kitchen



2. Legs



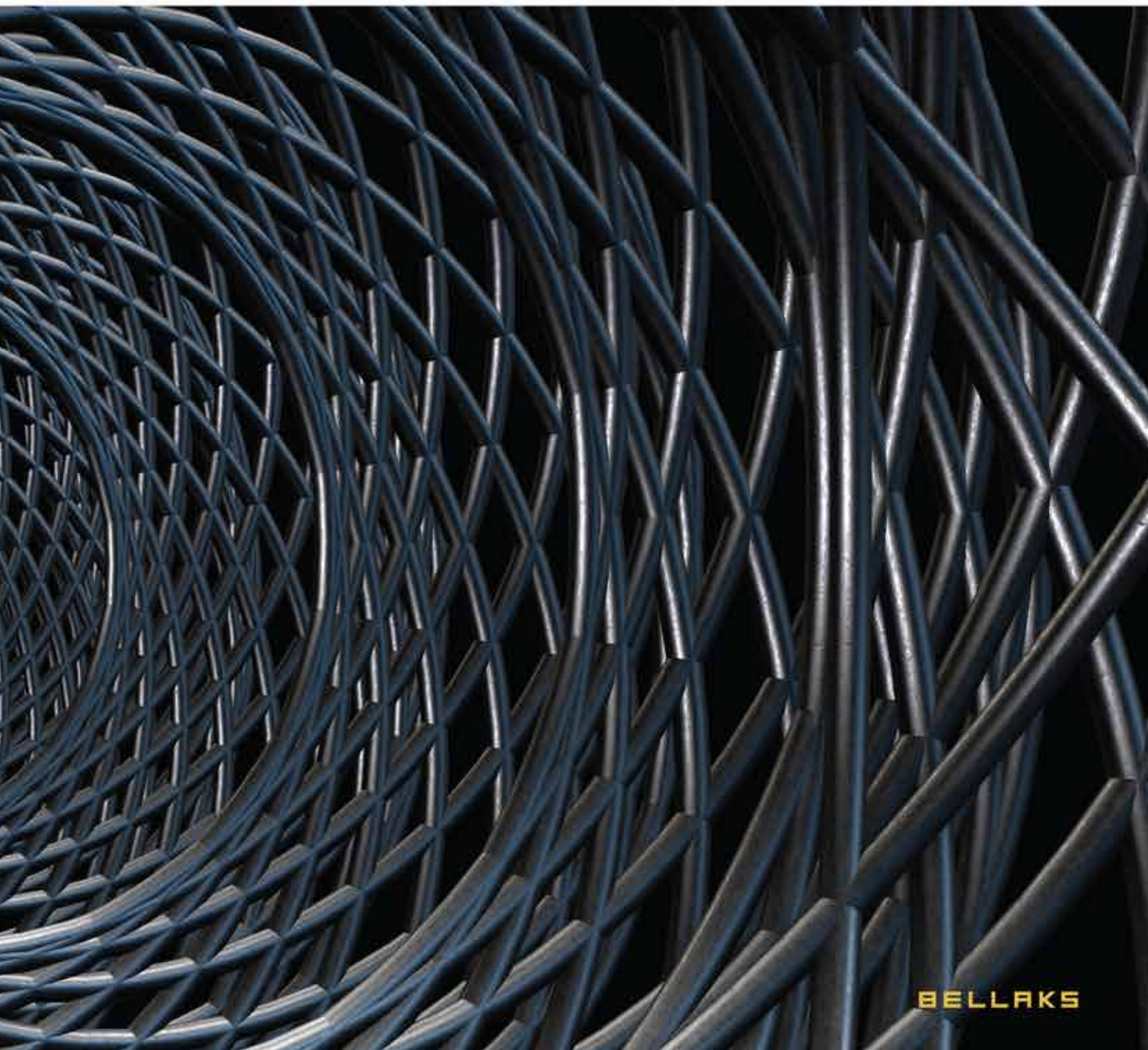
3. Various



4. Fittings



5. Color



BELLAKS

ACCESSORIES GROUPS

BELLAKS

1. KITCHEN ACCESSORIES



Maximum space saving for your kitchen and finding solutions



Pantry Group

Product Code	Dimension WxDxH (mm)	C (mm)	Basket	Weight (Gr.)	Volume (m3)
B-1001	230x500x600-800	300	2	8,65	0,055
B-1002	280x500x600-800	350	2	8,93	0,055
B-1003	330x500x600-800	400	2	9,12	0,055
B-1004	380x500x600-800	450	2	9,32	0,055
B-1005	430x500x600-800	500	2	9,53	0,055
B-1006	480x500x600-800	550	2	9,74	0,055

B-1007	230x500x700-850	300	3	10,07	0,072
B-1008	280x500x700-850	350	3	10,46	0,072
B-1009	330x500x700-850	400	3	10,79	0,072
B-1010	380x500x700-850	450	3	11,14	0,072
B-1011	430x500x700-850	500	3	11,62	0,072
B-1012	480x500x700-850	550	3	11,83	0,072

B-1013	230x500x850-1100	300	3	10,26	0,072
B-1014	280x500x850-1100	350	3	10,65	0,072
B-1015	330x500x850-1100	400	3	10,98	0,072
B-1016	380x500x850-1100	450	3	11,33	0,072
B-1017	430x500x850-1100	500	3	11,62	0,072
B-1018	480x500x850-1100	550	3	11,84	0,072

B-1019	230x500x1100-1250	300	4	12,11	0,104
B-1020	280x500x1100-1250	350	4	12,48	0,104
B-1021	330x500x1100-1250	400	4	12,91	0,104
B-1022	380x500x1100-1250	450	4	13,35	0,104
B-1023	430x500x1100-1250	500	4	13,87	0,104
B-1024	480x500x1100-1250	550	4	14,08	0,104

B-1025	230x500x1250-1400	300	4	12,29	0,104
B-1026	280x500x1250-1400	350	4	12,78	0,104
B-1027	330x500x1250-1400	400	4	13,91	0,104
B-1028	380x500x1250-1400	450	4	13,65	0,104
B-1029	430x500x1250-1400	500	4	14,16	0,104
B-1030	480x500x1250-1400	550	4	14,37	0,104

Product Code	Dimension WxDxH (mm)	C (mm)	Basket	Weight (Gr.)	Volume (m3)
B-1031	230x500x1400-1550	300	5	13,71	0,126
B-1032	280x500x1400-1550	350	5	14,29	0,126
B-1033	330x500x1400-1550	400	5	14,91	0,126
B-1034	380x500x1400-1550	450	5	15,34	0,126
B-1035	430x500x1400-1550	500	5	15,99	0,126
B-1036	480x500x1400-1550	550	5	16,21	0,126

B-1037	230x500x1550-1700	300	5	14,01	0,126
B-1038	230x500x1550-1700	350	5	14,61	0,126
B-1039	230x500x1550-1700	400	5	15,11	0,126
B-1040	230x500x1550-1700	450	5	15,65	0,126
B-1041	230x500x1550-1700	500	5	16,31	0,126
B-1042	230x500x1550-1700	550	5	16,53	0,126

B-1043	230x500x1700-1850	300	6	15,88	0,153
B-1044	280x500x1700-1850	350	6	16,57	0,153
B-1045	330x500x1700-1850	400	6	17,18	0,153
B-1046	380x500x1700-1850	450	6	17,81	0,153
B-1047	430x500x1700-1850	500	6	18,59	0,153
B-1048	480x500x1700-1850	550	6	18,81	0,153

B-1049	230x500x1850-2000	300	6	16,26	0,153
B-1050	230x500x1850-2000	350	6	16,95	0,153
B-1051	230x500x1850-2000	400	6	17,56	0,153
B-1052	230x500x1850-2000	450	6	18,19	0,153
B-1053	230x500x1850-2000	500	6	18,97	0,153
B-1054	230x500x1850-2000	550	6	19,18	0,153

B-1055	230x500x2000-2150	300	7	17,74	0,166
B-1056	230x500x2000-2150	350	7	18,55	0,166
B-1057	230x500x2000-2150	400	7	19,25	0,166
B-1058	230x500x2000-2150	450	7	20,01	0,166
B-1059	230x500x2000-2150	500	7	20,87	0,166
B-1060	230x500x2000-2150	550	7	21,09	0,166





Drawer Rack With Telescopic Sliders

Product Code	Dimension WxDxH (mm)	C (mm)	Box	Weight (Gr.)	Volume (m3)
B-2001	300x500x130	350	1	3,58	0,024
B-2002	350x500x130	400	1	3,72	0,024
B-2003	400x500x130	450	1	4,03	0,031
B-2004	450x500x130	500	1	4,17	0,031
B-2005	500x500x130	550	1	4,51	0,038
B-2006	550x500x130	600	1	4,66	0,038

Drawer Rack With Telescopic Sliders With Brake

B-2101	300x500x130	350	1	3,51	0,024
B-2102	350x500x130	400	1	3,65	0,024
B-2103	400x500x130	450	1	3,96	0,031
B-2104	450x500x130	500	1	4,10	0,031
B-2105	500x500x130	550	1	4,43	0,038
B-2106	550x500x130	600	1	4,59	0,038



Drawer Rack With Tandem Rail Full Extension

Product Code	Dimension WxDxH (mm)	C (mm)	Box	Weight (Gr.)	Volume (m3)
B-2251	300x500x130	350	1	3,51	0,024
B-2252	350x500x130	400	1	3,65	0,024
B-2253	400x500x130	450	1	3,96	0,031
B-2254	450x500x130	500	1	4,10	0,031
B-2255	500x500x130	550	1	4,43	0,038
B-2256	550x500x130	600	1	4,59	0,038

Drawer Rack With Tandem Rail Partial Extension

B-2261	300x500x130	350	1	3,51	0,024
B-2262	350x500x130	400	1	3,61	0,024
B-2263	400x500x130	450	1	3,96	0,031
B-2264	450x500x130	500	1	4,10	0,031
B-2265	500x500x130	550	1	4,43	0,038
B-2266	550x500x130	600	1	4,59	0,038



Economic Drawer/Rack With Telescopic Sliders

Product Code	Dimension WxDxH (mm)	C (mm)	Box	Weight (Gr.)	Volume (m3)
B-2301	255x450x130	300	1	2,36	0,024
B-2302	305x450x130	350	1	2,51	0,024
B-2303	355x450x130	400	1	2,62	0,024
B-2304	405x450x130	450	1	2,73	0,031
B-2305	455x450x130	500	1	2,86	0,031
B-2306	505x450x130	550	1	3,10	0,038
B-2307	555x450x130	600	1	3,42	0,038

Economic Drawer/Rack With Telescopic Sliders With Brake

B-2401	255x450x130	300	1	2,36	0,024
B-2402	305x450x130	350	1	2,51	0,024
B-2403	355x450x130	400	1	2,62	0,024
B-2404	405x450x130	450	1	2,73	0,031
B-2405	455x450x130	500	1	2,86	0,031
B-2406	505x450x130	550	1	3,10	0,038
B-2407	555x450x130	600	1	3,42	0,038

Double Rack With Telescopic Sliders

Product Code	Dimension WxDxH (mm)	C (mm)	Box	Weight (Gr.)	Volume (m3)
B-2501	230x450x500	300	1	5,20	0,068
B-2502	280x450x500	350	1	5,40	0,080
B-2503	330x450x500	400	1	5,53	0,093
B-2504	380x450x500	450	1	5,82	0,105
B-2505	430x450x500	500	1	5,92	0,117



Double Rack With Telescopic Sliders With Brake

B-2511	230x450x500	300	1	5,07	0,068
B-2512	280x450x500	350	1	5,26	0,080
B-2513	330x450x500	400	1	5,40	0,093
B-2514	380x450x500	450	1	5,68	0,105
B-2515	430x450x500	500	1	5,79	0,117



Double Dish Rack With Telescopic Sliders

Product Code	Dimension WxDxH (mm)	C (mm)	Box	Weight (Gr.)	Volume (m3)
B-2600	230x450x500	300	1	6,06	0,068
B-2601	280x450x500	350	1	6,26	0,080
B-2602	330x450x500	400	1	6,40	0,093
B-2603	380x450x500	450	1	6,68	0,105
B-2604	430x450x500	500	1	6,89	0,117



Triple Dish Rack With Telescopic Sliders

B-2701	280x450x500	350	1	6,96	0,080
B-2702	330x450x500	400	1	7,10	0,093
B-2703	380x450x500	450	1	7,38	0,105
B-2704	430x450x500	500	1	7,48	0,117
B-2711	280x450x500	350	1	6,84	0,080
B-2712	330x450x500	400	1	6,98	0,093
B-2713	380x450x500	450	1	7,26	0,105
B-2714	430x450x500	500	1	7,36	0,117



Bottle Basket With Telescopic Side Sliders

Product Code	Dimension WxDxH (mm)	Color	Box	Weight (Gr.)	Volume (m3)
B-3001	110 x 470 Ø 15	Chrome	1	3,82	0,025
B-3002	160 x 470 Ø 20	Chrome	1	3,95	0,032
B-3003	220 x 470 Ø 25	Chrome	1	4,24	0,043

Bottle Basket With Telescopic Side Sliders Brake

Product Code	Dimension WxDxH (mm)	C (mm)	Box	Weight (Gr.)	Volume (m3)
B-3101	105 x 470 x 470	150	1	3,14	0,028
B-3102	153 x 470 x 470	200	1	3,27	0,038
B-3103	205 x 470 x 470	250	1	3,58	0,047
B-3104	205/155 x 470 x 470	250	1	3,58	0,047



Single Opening Bottle Basket With Blum Tandem Sliders

Product Code	Dimension WxDxH (mm)	C (mm)	Box	Weight (Gr.)	Volume (m3)
B-3701- Left	105 x 470 x 470	150	1	4,15	0,028
B-3702- Left	153 x 470 x 470	200	1	4,25	0,038
B-3703- Left	205 x 470 x 470	250	1	4,55	0,047
B-3704- Right	105 x 470 x 470	150	1	4,15	0,028
B-3705- Right	153 x 470 x 470	200	1	4,25	0,038
B-3706-Right	205 x 470 x 470	250	1	4,55	0,047



Bottle Basket With Telescopic Sliders With Brake and Wooden Bottom

Product Code	Dimension WxDxH (mm)	C (mm)	Box	Weight (Gr.)	Volume (m3)
B-3301	105 x 470 x 470	150	1	3,34	0,028
B-3302	153 x 470 x 470	200	1	3,57	0,038
B-3303	205 x 470 x 470	250	1	3,88	0,047

Bottle Basket With Telescopic Bottom Sliders

Product Code	Dimension WxDxH (mm)	Color	Box	Weight (Gr.)	Volume (m3)
B-3401	105 x 470 x 470	150	1	3,34	0,028
B-3402	153 x 470 x 470	200	1	3,57	0,038
B-3403	205 x 470 x 470	250	1	3,88	0,047



Dual Opening Bottle Basket With Tandem Sliders With Wooden Bottom (Smart)

Product Code	Dimension WxDxH (mm)	C (mm)	Box	Weight (Gr.)	Volume (m3)
B-3501 Right	105 x 470 x 470	150	1	4,15	0,028
B-3502 Left	105 x 470 x 470	150	1	4,15	0,028
B-3503 Right	153 x 470 x 470	200	1	4,25	0,038
B-3504 Left	153 x 470 x 470	200	1	4,25	0,038
B-3505 Right	205 x 470 x 470	250	1	4,55	0,048
B-3506 Left	205 x 470 x 470	250	1	4,55	0,048



Single Opening Bottle Basket With Tandem Sliders With Wooden Bottom (Smart)

Product Code	Dimension WxDxH (mm)	C (mm)	Box	Weight (Gr.)	Volume (m3)
B-3601 Right	105 x 470 x 470	150	1	4,15	0,028
B-3602 Left	105 x 470 x 470	150	1	4,15	0,028
B-3603 Right	153 x 470 x 470	200	1	4,25	0,038
B-3604 Left	153 x 470 x 470	200	1	4,25	0,038
B-3605 Right	205 x 470 x 470	250	1	4,55	0,047
B-3606 Left	205 x 470 x 470	250	1	4,55	0,047





Triple Folio Rack

Product Code	Dimension WxDxH (mm)	C (mm)	Box	Weight (Gr.)	Volume (m3)
B-4001	330 x 135 x 360		1	3,35	0,245



Double Folio Rack

Product Code	Dimension WxDxH (mm)	C (mm)	Box	Weight (Gr.)	Volume (m3)
B-4002	330 x 135 x 360		1	2,55	0,245



Single Towel Rack

Product Code	Dimension WxDxH (mm)	C (mm)	Box	Weight (Gr.)	Volume (m3)
B-4003	330 x 135 x 360		1	1,84	0,245



Dual Spice Rack

Product Code	Dimension WxDxH (mm)	C (mm)	Box	Weight (Gr.)	Volume (m3)
B-4004	340 x 135 x 360		1	2,96	0,245
B-4005	340 x 135 x 360		1	3,16	0,245
B-4006	340 x 135 x 360		1	3,08	0,245



Single Spice Rack

Product Code	Dimension WxDxH (mm)	C (mm)	Box	Weight (Gr.)	Volume (m3)
B-4007	340 x 135 x 360		1	2,11	0,245



Plate and Glass Rack

Product Code	Dimension WxDxH (mm)	C (mm)	Box	Weight (Gr.)	Volume (m3)
B-4009	340 x 135 x 360		1	3,44	0,245



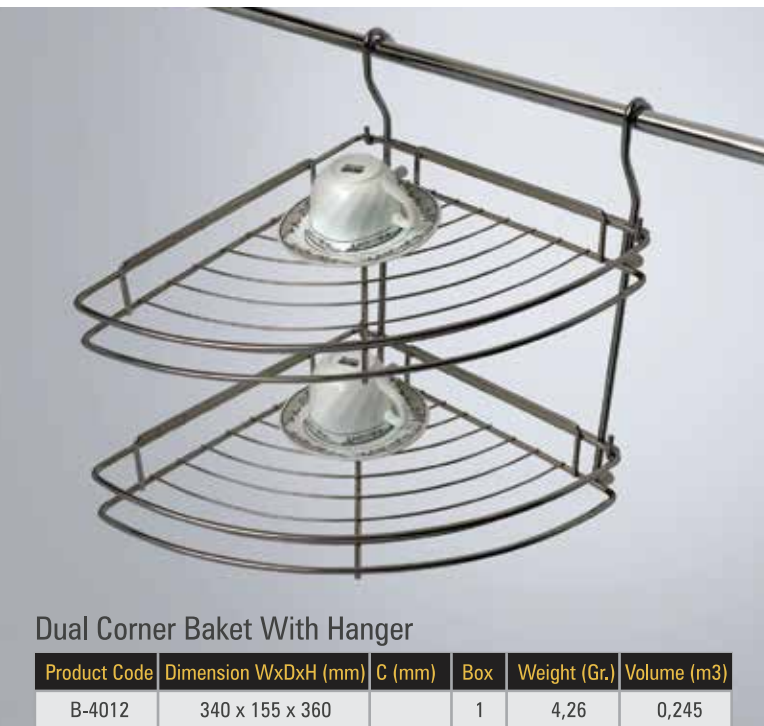
Glass Hanger

Product Code	Dimension WxDxH (mm)	C (mm)	Box	Weight (Gr.)	Volume (m3)
B-4010	230 x 125 x 360		1	1,85	0,245



Wooden Knife Holder

Product Code	Dimension WxDxH (mm)	C (mm)	Box	Weight (Gr.)	Volume (m3)
B-4011	230 x 125 x 360		1	2,24	0,245



Dual Corner Basket With Hanger

Product Code	Dimension WxDxH (mm)	C (mm)	Box	Weight (Gr.)	Volume (m3)
B-4012	340 x 155 x 360		1	4,26	0,245



Single Corner With Hanger

Product Code	Dimension WxDxH (mm)	C (mm)	Box	Weight (Gr.)	Volume (m3)
B-4013	340 x 155 x 360		1	2,32	0,245



Stainless Spoon Holder

Product Code	Dimension WxDxH (mm)	C (mm)	Box	Weight (Gr.)	Volume (m3)
B-4014	120 x 140 x 350		1	0,54	0,089



Glass Hanger

Product Code	Dimension WxDxH (mm)	C (mm)	Box	Weight (Gr.)	Volume (m3)
B-4017	120 x 360 x 70		1	0,23	0,019
B-4018	220 x 360 x 70		1	0,48	0,019



Glass Hanger

Product Code	Dimension WxDxH (mm)	C (mm)	Box	Weight (Gr.)	Volume (m3)
B-4019	440 x 360 x 70		1	0,99	0,025
B-4020	440 x 360 x 70		1	0,88	0,025



Dish Rack

Product Code	Dimension WxDxH (mm)	C (mm)	Box	Weight (Gr.)	Volume (m3)
B-4501-60	560-570 x 270 x 110	600	1	0,83	0,015
B-4502-70	660-670 x 270 x 110	700	1	0,93	0,015
B-4503-80	760-770 x 270 x 110	800	1	1,03	0,020
B-4504-90	860-870 x 270 x 110	900	1	1,13	0,020



Glass Rack

Product Code	Dimension WxDxH (mm)	C (mm)	Box	Weight (Gr.)	Volume (m3)
B-4531-60	560-570 x 270 x 110	600	1	0,64	0,015
B-4532-70	660-670 x 270 x 110	700	1	0,74	0,015
B-4533-80	760-770 x 270 x 110	800	1	0,84	0,020
B-4534-90	860-870 x 270 x 110	900	1	0,94	0,020

Glass Rack With Plastic Tray

B-4541-60	560-570 x 270 x 110	600	1	0,64	0,015
B-4542-70	660-670 x 270 x 110	700	1	0,74	0,015
B-4543-80	760-770 x 270 x 110	800	1	0,84	0,020
B-4544-90	860-870 x 270 x 110	900	1	0,94	0,020

Glass & Dish Rack Set With Plastic Tray

B-4551-60	560-570 x 270	600	1	1,47	0,015
B-4552-70	660-670 x 270	700	1	1,67	0,015
B-4553-80	760-770 x 270	800	1	1,87	0,020
B-4554-90	860-870 x 270	900	1	2,07	0,020



Turnable 1/2 Basket

Product Code	Dimension WxDxH (mm)	C (mm)	Box	Weight (Gr.)	Volume (m3)
B-5001	740 x 410 x 650-700		1	0,054	4,81

Turnable 3/4 Basket

Product Code	Dimension WxDxH (mm)	C (mm)	Box	Weight (Gr.)	Volume (m3)
B-5002	600 x 650-700		1	6,85	0,070
B-5003	740 x 650-700		1	7,59	0,089



Turnable 4/4 Basket

Product Code	Dimension WxDxH (mm)	C (mm)	Box	Weight (Gr.)	Volume (m3)
B-5004	600 x 650-700		1	5,75	0,070
B-5005	740 x 650-700		1	6,40	0,098



Turnable Corner Mechanism For Blind Corners

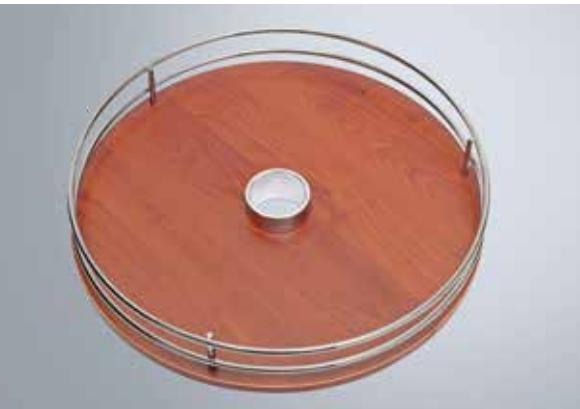
Product Code	Dimension WxDxH (mm)	C (mm)	Box	Weight (Gr.)	Volume (m3)
B-6001 Right	780 x 450 x 600-730	450	1	13,05	0,080
B-6002 Left	780 x 450 x 600-730	450	1	13,05	0,080





Turnable Basket Wire Base

Product Code	Dimension WxDxH (mm)	C (mm)	Box	Weight (Gr.)	Volume (m3)
B-6161	360 x 360		1	1,33	0,014



Turnable Basket Wooden Base

Product Code	Dimension WxDxH (mm)	C (mm)	Box	Weight (Gr.)	Volume (m3)
B-6162	360 x 360		1	1,65	0,014



Turnable Basket Transparent Base

Product Code	Dimension WxDxH (mm)	C (mm)	Box	Weight (Gr.)	Volume (m3)
B-6163	360 x 360		1	1,65	0,014

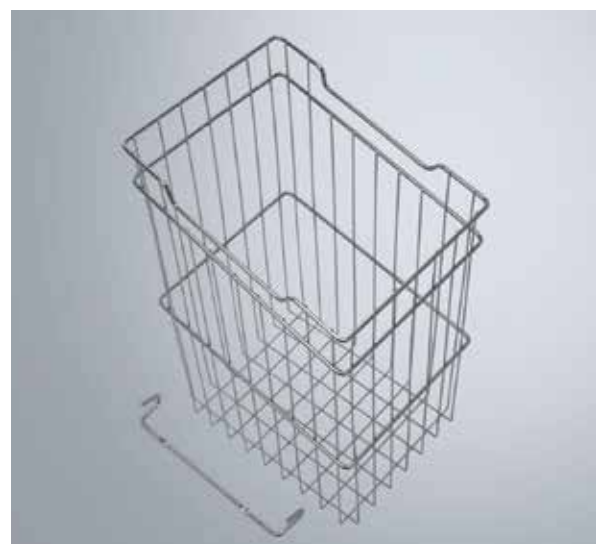


Laundry Basket

Product Code	Dimension WxDxH (mm)	C (mm)	Box	Weight (Gr.)	Volume (m3)
B-8001	230 x 250 x 400	300	1	0,88	0,068
B-8002	280 x 250 x 400	350	1	0,97	0,080
B-8003	330 x 250 x 400	400	1	1,05	0,093
B-8004	380 x 250 x 400	450	1	1,12	0,105
B-8005	430 x 250 x 400	500	1	1,20	0,117
B-8006	480 x 250 x 400	550	1	1,27	0,125
B-8101	230 x 250 x 400	300	1	1,16	0,068
B-8102	280 x 250 x 400	350	1	1,21	0,080
B-8103	330 x 250 x 400	400	1	1,25	0,093
B-B8104	380 x 250 x 400	450	1	1,31	0,105
B-8105	430 x 250 x 400	500	1	1,38	0,117
B-8106	480 x 250 x 400	550	1	1,45	0,125

Laundry Basket With Hanger

Product Code	Dimension WxDxH (mm)	C (mm)	Box	Weight (Gr.)	Volume (m3)
B-9101	230 x 300 x 450	300	1	1,09	0,068
B-9102	280 x 300 x 450	350	1	1,14	0,080
B-9103	330 x 300 x 450	400	1	1,30	0,093
B-9104	380 x 300 x 450	450	1	1,35	0,105
B-9105	430 x 300 x 450	500	1	1,49	0,117
B-9301	230 x 300 x 500	300	1	1,51	0,068
B-9302	280 x 300 x 500	350	1	1,60	0,080
B-9303	330 x 300 x 500	400	1	1,82	0,093
B-9304	380 x 300 x 500	450	1	1,91	0,105
B-9305	430 x 300 x 500	500	1	2,19	0,117
B-9306	480 x 300 x 500	550	1	2,37	0,125
B-9307	530 x 300 x 500	600	1	2,54	0,134



Laundry Basket With Bottom Sliders (Short)

Product Code	Dimension WxDxH (mm)	C (mm)	Box	Weight (Gr.)	Volume (m3)
B-9501	230 x 300 x 500	300	1	2,57	0,068
B-950	280 x 300 x 500	350	1	2,63	0,080
B-9503	330 x 300 x 500	400	1	2,78	0,093
B-9504	380 x 300 x 500	450	1	2,83	0,105
B-9505	430 x 300 x 500	500	1	2,97	0,117



Laundry Basket With Bottom Sliders (Long)

B-9551	230 x 300 x 550	300	1	3,00	0,068
B-9552	280 x 300 x 550	350	1	3,08	0,080
B-9553	330 x 300 x 550	400	1	3,30	0,093
B-9554	380 x 300 x 550	450	1	3,39	0,105
B-9555	430 x 300 x 550	500	1	3,68	0,117

Metal Vegetable Rack With 4 Plastic Shelves

Product Code	Dimension WxDxH (mm)	C (mm)	Basket	Weight (Gr.)	Box
B-300	350x450x820				





Spoon Holder

Product Code	Dimension WxDxH (mm)	Color	Box	Weight (Gr.)	Volume (m3)
B-2749	270 x 490 mm	Grey	12	5	0,021
B-3039	300 x 390 mm	Grey	12	7	0,019
B-3749	370 x 490 mm	Grey	12	9	0,029
B-4249	420 x 490 mm	Grey	12	11	0,033
B-4649	460 x 490 mm	Grey	12	13	0,036
B-5549	550 x 490 mm	Grey	12	14	0,043
B-6749	670 x 490 mm	Grey	12	16	0,052
B-8549	850 x 490 mm	Grey	12	18	0,066



Spoon Holder - Luxury

Product Code	Dimension WxDxH (mm)	Color	Box	Weight (Gr.)	Volume (m3)
B-3049-L	300 x 490 mm	Grey	12	7	0,019
B-3749-L	370 x 490 mm	Grey	12	9	0,029
B-4249-L	420 x 490 mm	Grey	12	11	0,033
B-4649-L	460 x 490 mm	Grey	12	13	0,036
B-4955-L	550 x 490 mm	Grey	12	14	0,043
B-6749-L	670 x 490 mm	Grey	12	16	0,052
B-7549-L	750 x 490 mm	Grey	12	17	0,058
B-8549-L	850 x 490 mm	Grey	12	18	0,066
B-9749-L	970 x 490 mm	Grey	12	20	0,076



Stainless Steel Waste Bin

Product Code	Dimension WxDxH (mm)	Color	Box	Weight (Gr.)	Volume (m3)
B-8472	11 LT.304 (First Quality)	Inox	8		
B-8472-E	11 LT.201 (Second Quality)	Inox	8		



Waste Bin With Slider

Product Code	Dimension WxDxH (mm)	Color	Basket	Weight (Gr.)	Box
B-5001		Chrome			6
B-5002		Chrome			6
B-5003		Chrome			8
B-5004		Chrome			8

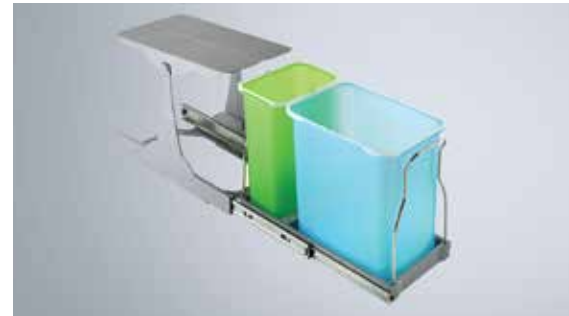


Independent Waste Bin With Telescopic Rail 16 Lt.

Product Code	Dimension WxDxH (mm)	Color	Box	Weight (Gr.)	Volume (m3)
B-301	287x333x362		1	2,940	0,040

Independent Waste Bin With Telescopic Rail 24 Lt..

Product Code	Dimension WxDxH (mm)	Color	Box	Weight (Gr.)	Volume (m3)
B-302	236x470x360		1	4,380	0,050



Independent Waste Bin With Telescopic Rail 32 Lt..

Product Code	Dimension WxDxH (mm)	Color	Box	Weight (Gr.)	Volume (m3)
B-303	355x473x365		1	5,180	0,071



Waste Bin Mounted to Door With Telescopic Rail 32 Lt.

Product Code	Dimension WxDxH (mm)	Color	Box	Weight (Gr.)	Volume (m3)
B-304	355x466x365		1	6,160	0,083



Cooker Hood With Double Motors And Double Filters

Product Code	Dimension WxDxH (mm)	Color	Box	Weight (Gr.)	Volume (m3)
B-ACLC2	615 x 195 x 330		1	700	0,04



Filter For Cooker Hood

Product Code	Dimension WxDxH (mm)	Color	Basket	Weight (Gr.)	Box
B-ASLC2-F		Black			



Undersink Base

Product Code	Dimension WxDxH (mm)	Color	Basket	Weight (Gr.)	Box
B-507-60		Chrome			10
B-507-70		Chrome			10
B-507-80		Chrome			10
B-507-90		Chrome			10
B-507-100		Chrome			10
B-507-110		Chrome			10
B-507-120		Chrome			10





BELLAKS

2. LEGS



Giving different alternatives for your cabinets



Aluminium Square Leg With Lines

Product Code	Dimension WxDxH (mm)	Color	Basket	Weight (Gr.)	Box
L-320-5-51	400 x 400 mm Ø 5 cm	Eloxal			150
L-320-5-64	400 x 400 mm Ø 5 cm	Inox			150
L-320-5-42	400 x 400 mm Ø 5 cm	Chrome			150
L-320-8-51	400 x 400 mm Ø 8 cm	Eloxal			125
L-320-8-64	400 x 400 mm Ø 8 cm	Inox			125
L-320-8-42	400 x 400 mm Ø 8 cm	Chrome			125
L-320-10-51	400 x 400 mm Ø 10 cm	Eloxal			100
L-320-10-64	400 x 400 mm Ø 10 cm	Inox			100
L-320-10-42	400 x 400 mm Ø 10 cm	Chrome			100
L-320-12-51	400 x 400 mm Ø 12 cm	Eloxal			100
L-320-12-64	400 x 400 mm Ø 12 cm	Inox			100
L-320-12-42	400 x 400 mm Ø 12 cm	Chrome			100
L-320-15-51	400 x 400 mm Ø 15 cm	Eloxal			50
L-320-15-64	400 x 400 mm Ø 15 cm	Inox			50
L-320-15-42	400 x 400 mm Ø 15 cm	Chrome			50
L-320-20-51	400 x 400 mm Ø 20 cm	Eloxal			50
L-320-20-64	400 x 400 mm Ø 20 cm	Inox			50
L-320-20-42	400 x 400 mm Ø 20 cm	Chrome			50
L-320-25-51	400 x 400 mm Ø 25 cm	Eloxal			50
L-320-25-64	400 x 400 mm Ø 25 cm	Inox			50
L-320-25-42	400 x 400 mm Ø 25 cm	Chrome			50



Aluminium Square Leg

Product Code	Dimension WxDxH (mm)	Color	Basket	Weight (Gr.)	Box
L-321-5-51	400 x 400 mm Ø 5 cm	Eloxal			150
L--321-5-64	400 x 400 mm Ø 5 cm	Inox			150
L--321-5-42	400 x 400 mm Ø 5 cm	Chrome			150
L--321-8-51	400 x 400 mm Ø 8 cm	Eloxal			125
L--321-8-64	400 x 400 mm Ø 8 cm	Inox			125
L--321-8-42	400 x 400 mm Ø 8 cm	Chrome			125
L--321-10-51	400 x 400 mm Ø 10 cm	Eloxal			100
L--321-10-64	400 x 400 mm Ø 10 cm	Inox			100
L--321-10-42	400 x 400 mm Ø 10 cm	Chrome			100
L--321-12-51	400 x 400 mm Ø 12 cm	Eloxal			100
L--321-12-64	400 x 400 mm Ø 12 cm	Inox			100
L--321-12-42	400 x 400 mm Ø 12 cm	Chrome			100
L--321-15-51	400 x 400 mm Ø 15 cm	Eloxal			50
L--321-15-64	400 x 400 mm Ø 15 cm	Inox			50
L--321-15-42	400 x 400 mm Ø 15 cm	Chrome			50
L--321-20-51	400 x 400 mm Ø 20 cm	Eloxal			50
L--321-20-64	400 x 400 mm Ø 20 cm	Inox			50
L--321-20-42	400 x 400 mm Ø 20 cm	Chrome			50
L--321-25-51	400 x 400 mm Ø 25 cm	Eloxal			50
L--321-25-64	400 x 400 mm Ø 25 cm	Inox			50
L--321-25-42	400 x 400 mm Ø 25 cm	Chrome			50

Metal Base Leg With Plastic Bingo

Product Code	Dimension WxDxH (mm)	Color	Basket	Weight (Gr.)	Box
L-8325	600 mm Ø 32 mm	Chrome			200
L-8326	800 mm Ø 32 mm	Chrome			150
L-8327	1000 mm Ø 32 mm	Chrome			150
L-8328	1200 mm Ø 32 mm	Chrome			100
L-8329	1500 mm Ø 32 mm	Chrome			100
L-8330	2000 mm Ø 32 mm	Chrome			100
L-8331	2500 mm Ø 32 mm	Chrome			70
L-8317	600 mm Ø 42 mm	Chrome			150
L-8318	800 mm Ø 42 mm	Chrome			150
L-8319	1000 mm Ø 42 mm	Chrome			125
L-8320	1200 mm Ø 42 mm	Chrome			100
L-8321	1500 mm Ø 42 mm	Chrome			100
L-8322	2000 mm Ø 42 mm	Chrome			60
L-8323	2500 mm Ø 42 mm	Chrome			50



Metal Base Leg With Plastic Bingo

Product Code	Dimension WxDxH (mm)	Color	Basket	Weight (Gr.)	Box
L-8309	600 mm Ø 51 mm	Chrome			120
L-8310	800 mm Ø 51 mm	Chrome			100
L-8311	1000 mm Ø 51 mm	Chrome			100
L-8312	1200 mm Ø 51 mm	Chrome			80
L-8313	1500 mm Ø 51 mm	Chrome			50
L-8314	2000 mm Ø 51 mm	Chrome			50
L-8315	2500 mm Ø 51 mm	Chrome			50
L-8301	600 mm Ø 60 mm	Chrome			100
L-8302	800 mm Ø 60 mm	Chrome			100
L-8303	1000 mm Ø 60 mm	Chrome			100
L-8304	1200 mm Ø 60 mm	Chrome			70
L-8305	1500 mm Ø 60 mm	Chrome			50
L-8306	2000 mm Ø 60 mm	Chrome			50
L-8307	2500 mm Ø 60 mm	Chrome			30



Metal Leg For Wooden Table

Product Code	Dimension WxDxH (mm)	Color	Basket	Weight (Gr.)	Box
L-8101	600 x 710 mm Ø 38 mm	Chrome			4
L-8102	600 x 710 mm Ø 48 mm	Chrome			4





Metal Leg For Wooden Table

Product Code	Dimension WxDxH (mm)	Color	Basket	Weight (Gr.)	Box
L-8101-40	600 x 400 mm Ø 38 mm	Chrome			1
L-8102-40	600 x 400 mm Ø 48 mm	Chrome			1



Metal Leg For Glass Table

Product Code	Dimension WxDxH (mm)	Color	Basket	Weight (Gr.)	Box
L-8103	600 x 710 mm Ø 38 mm	Chrome			1
L-8104	600 x 710 mm Ø 48 mm	Chrome			1



Metal Leg For Glass Table

Product Code	Dimension WxDxH (mm)	Color	Basket	Weight (Gr.)	Box
L-8103-40	600 x 400 mm Ø 38 mm	Chrome			1
L-8104-40	600 x 400 mm Ø 48 mm	Chrome			1



Square Metal Leg For Wooden Table

Product Code	Dimension WxDxH (mm)	Color	Basket	Weight (Gr.)	Box
L-8105	600 x 710 mm Ø 38 mm	Chrome			1



Square Metal Leg For Wooden Coffee Table

Product Code	Dimension WxDxH (mm)	Color	Basket	Weight (Gr.)	Box
L-8105-40	600 x 400 mm Ø 38 mm	Chrome			1



Square Metal Leg For Glass Table

Product Code	Dimension WxDxH (mm)	Color	Basket	Weight (Gr.)	Box
L-8106	600 x 710 mm Ø 38 mm	Chrome			1

Square Metal Leg For Glass Coffee Table

Product Code	Dimension WxDxH (mm)	Color	Basket	Weight (Gr.)	Box
L-8106-40	600 x 400 mm Ø 38 mm	Chrome			1



Metal Leg For Wooden Table

Product Code	Dimension WxDxH (mm)	Color	Basket	Weight (Gr.)	Box
L-8109	600 x 710 mm	Chrome			4
L-8110	600 x 400 mm	Chrome			4



Metal Leg For Wooden Table

Product Code	Dimension WxDxH (mm)	C (mm)	Basket	Weight (Gr.)	Box
L-8111	760 x 710 mm	Chrome			4
L-8112	760 x 400 mm	Chrome			4



Metal Conic Leg

Product Code	Dimension WxDxH (mm)	Color	Basket	Weight (Gr.)	Box
L-8411-5	500 mm	Chrome		230	400
L-8411-8	800 mm	Chrome		250	300
L-8411-10	1000 mm	Chrome		200	250
L-8411-12	1200 mm	Chrome		210	200





Plastic Conic Leg

Product Code	Dimension WxDxH (mm)	Color	Basket	Weight (Gr.)	Box
L-8407-05	600 mm	Metalized			300
L-8407-05	600 mm	Matt Chrome			300
L-8407-05	600 mm	Chrome			300
L-8407-08	800 mm	Metalized			250
L-8407-08	800 mm	Matt Chrome			250
L-8407-08	800 mm	Chrome			250
L-8407-10	1000 mm	Metalized			300
L-8407-10	1000 mm	Matt Chrome			300
L-8407-10	1000 mm	Chrome			300

Plastic Conic Leg

Product Code	Dimension WxDxH (mm)	Color	Basket	Weight (Gr.)	Box
L-8406-05	500 mm	Metalized			300
L-8406-05	500 mm	Matt Chrome			300
L-8406-05	500 mm	Chrome			300
L-8406-08	800 mm	Metalized			250
L-8406-08	800 mm	Matt Chrome			250
L-8406-08	800 mm	Chrome			250
L-8406-10	1000 mm	Metalized			200
L-8406-10	1000 mm	Matt Chrome			200
L-8406-10	1000 mm	Chrome			200

Chubby Leg

Product Code	Dimension WxDxH (mm)	Color	Basket	Weight (Gr.)	Box
L-8408-10	1000 mm	Metalized			200
L-8408-10	1000 mm	Matt Chrome			200
L-8408-10	1000 mm	Chrome			200

Plastic Ciylander Leg

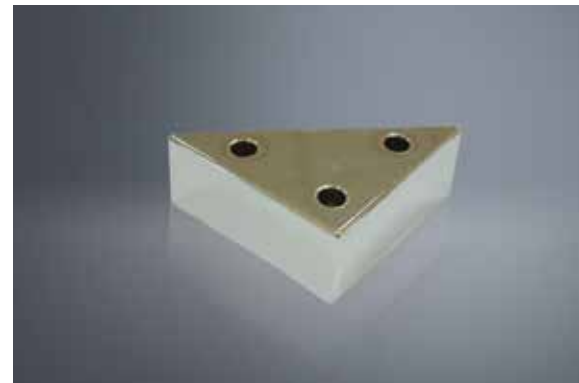
Product Code	Dimension WxDxH (mm)	Color	Basket	Weight (Gr.)	Box
L-8405-6	600 mm Ø 47 mm	Metalized			100
L-8405-6	600 mm Ø 47 mm	Matt Chrome			100
L-8405-6	600 mm Ø 47 mm	Chrome			100
L-8405-8	800 mm Ø 47 mm	Metalized			100
L-8405-8	800 mm Ø 47 mm	Matt Chrome			100
L-8405-8	800 mm Ø 47 mm	Chrome			100
L-8405-10	1000 mm Ø 47 mm	Metalized			100
L-8405-10	1000 mm Ø 47 mm	Matt Chrome			100
L-8405-10	1000 mm Ø 47 mm	Chrome			100

Plastic Ciylander Leg - Eco

Product Code	Dimension WxDxH (mm)	Color	Basket	Weight (Gr.)	Box
L-8404-06	600 mm Ø 47 mm	Matt Chrome			200
L-8404-08	800 mm Ø 47 mm	Matt Chrome			150
L-8404-10	1000 mm Ø 47 mm	Matt Chrome			150

Triangle Leg

Product Code	Dimension WxDxH (mm)	Color	Basket	Weight (Gr.)	Box
L-8410	70 x 700 mm	Chrome			300
L-8410	70 x 700 mm	Metalized			300
L-8410	70 x 700 mm	Painted			300



Vase Leg - Without Sheet Metal

Product Code	Dimension WxDxH (mm)	Color	Basket	Weight (Gr.)	Box
L-8409-1		Various			250
L-8409-2		Various			250



Metal Square Bolt Nut

Product Code	Dimension WxDxH (mm)	Color	Basket	Weight (Gr.)	Box
L-6065-14	1,2 x 50 x 50 mm Ø M8	Zinc	21		250
L-6065-15	1,2 x 50 x 50 mm Ø M10	Zinc	21		250
L-6065-16	1,2 x 50 x 50 mm Ø 3/8	Zinc	24		250



Plastik Large Bingo Leg

Product Code	Dimension WxDxH (mm)	Color	Basket	Weight (Gr.)	Box
L-6050-R	M6/M8	Various			200



Plastic Small Bingo Leg

Product Code	Dimension WxDxH (mm)	Color	Basket	Weight (Gr.)	Box
L-6051-R	M6/M8	Various			200





Metal Elipse Bolt Nut

Product Code	Dimension WxDxH (mm)	Color	Basket	Weight (Gr.)	Box
L-6064-14	Ø M10	Zinc		21	200
L-6064-15	Ø M8	Zinc		21	200
L-6064-16	Ø M10	Zinc		21	200



Plastic Adjustable Plinth Leg

Product Code	Dimension WxDxH (mm)	Color	Basket	Weight (Gr.)	Box
L-6054-08	800 mm	White/Black		11	300
L-6054-10	1000 mm	White/Black		12	300
L-6054-12	1200 mm	White/Black		13	300
L-6054-15	1500 mm	White/Black		14	300



Plastic Adjustable Printh Leg

Product Code	Dimension WxDxH (mm)	Color	Basket	Weight (Gr.)	Box
L-6054-1015	100 x 150 mm	White/Black		15	250



Plastic Clips

Product Code	Dimension WxDxH (mm)	Color	Basket	Weight (Gr.)	Box
L-6054-PC		White/Black		12	300



BELLAKS

3. VARIOUS ACCESSORIES



Offering smart solutions for your furnitures



Leader Bed Mechanism

Product Code	Dimension WxDxH (mm)	Color	Basket	Weight (Gr.)	Box
V-6115-B		Black		21	12-20



Bed Base Mechanism

Product Code	Dimension WxDxH (mm)	Color	Basket	Weight (Gr.)	Box
V-6115-A	MK-40	Black		20	12-20



Small Chest Mechanism

Product Code	Dimension WxDxH (mm)	Color	Basket	Weight (Gr.)	Box
V-6118-S		Zinc		28	70



Big Japanese Sofa Mechanism

Product Code	Dimension WxDxH (mm)	Color	Basket	Weight (Gr.)	Box
V-6119		Zinc		24	

Corner Sofa Mechanism

Product Code	Dimension WxDxH (mm)	Color	Basket	Weight (Gr.)	Box
V-6121		Black		24	



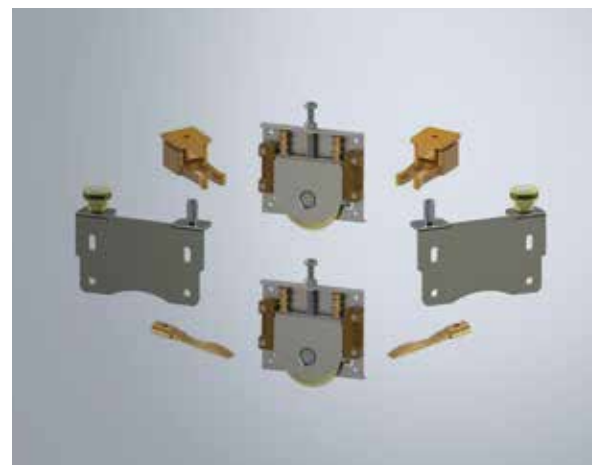
Gas Spring

Product Code	Dimension WxDxH (mm)	Color	Weight (Gr.)	Box
V-6116-45	450N	Electrostatic Painted	25	100
V-6116-75	750N	Electrostatic Painted	25	100
V-6116-100	1000N	Electrostatic Painted	25	100
V-6116-120	1200N	Electrostatic Painted	25	100
V-6116-150	1500N	Electrostatic Painted	25	100



Sliding Door Mechanism Set - Male

Product Code	Dimension WxDxH (mm)	Color	Basket	Weight (Gr.)	Box
V-ST80UK		Zinc		18,60	24



Sliding Door Mechanism Set - Eco Type - Male

Product Code	Dimension WxDxH (mm)	Color	Basket	Weight (Gr.)	Box
V-ST80UK-E		Zinc		18,60	24





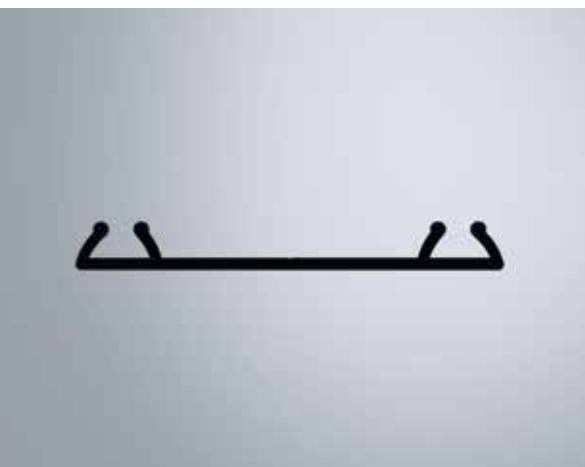
Sliding Door Mechanism - Male

Product Code	Dimension WxDxH (mm)	Color	Basket	Weight (Gr.)	Box
V-ST100-M	Male	Zinc		21	100
V-ST100-F	Female	Zinc		21	100



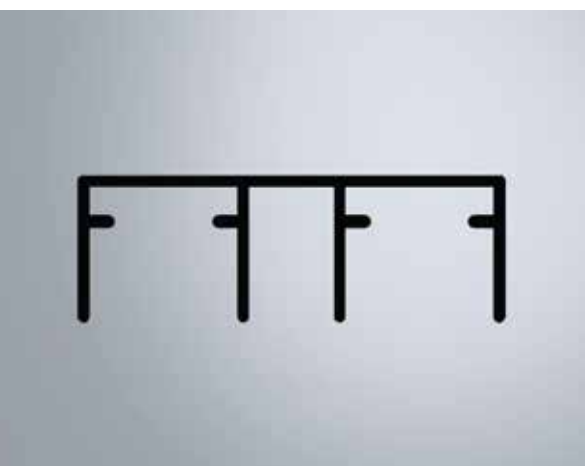
Sliding Door Mechanism - Eco Type - Male

Product Code	Dimension WxDxH (mm)	Color	Basket	Weight (Gr.)	Box
V-ST80-E		Zinc		18	120



Bottom Rail

Product Code	Dimension WxDxH (mm)	C (mm)	Basket	Weight (Gr.)	Box
V-0067		Eloxal		0,223	10



Upper Rail

Product Code	Dimension WxDxH (mm)	Color	Basket	Weight (Gr.)	Box
V-10468		Eloxal		0,478	10

Adjustable Soft Closer

Product Code	Dimension WxDxH (mm)	C (mm)	Basket	Weight (Gr.)	Box
V-1221-001		Grey			1



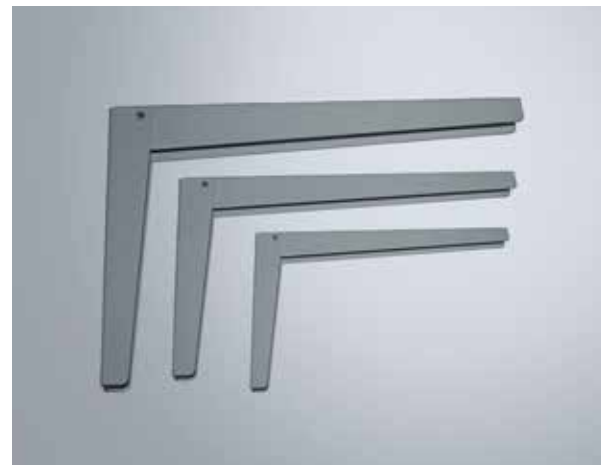
Standard Drawer Slides

Product Code	Dimension WxDxH (mm)	C (mm)	Basket	Weight (Gr.)	Box
V-isr-0125	250	White			25
V-isr-0130	300	White			25
V-isr-0135	350	White			25
V-isr-0140	400	White			25
V-isr-0145	450	White			25
V-isr-0150	500	White			25
V-isr-0155	550	White			25
V-isr-0160	600	White			25



Foldable Shelf Support

Product Code	Dimension WxDxH (mm)	Color	Basket	Weight (Gr.)	Box
V-4030	300 mm	White			15
V-4040	400 mm	White			15



Butterfly Hingle

Product Code	Dimension WxDxH (mm)	Color	Basket	Weight (Gr.)	Box
V-4030	200 mm	Satin		24	240
V-4040	25 mm	Satin		24	240





Aluminium Worktop Side Cover

Product Code	Dimension WxDxH (mm)	Color	Basket	Weight (Gr.)	Box
V-8413-60-3	30 x 600	Eloxal/Inox			250
V-8413-70-3	30 x 700	Eloxal/Inox			250
V-8413-60-4	40 x 600	Eloxal/Inox			250
V-8413-70-4	40 x 700	Eloxal/Inox			250

Aluminium Worktop Joint Lath

V-8414-60-3	30 x 600	Eloxal/Inox			250
V-8414-70-3	30 x 700	Eloxal/Inox			250
V-8414-60-4	40 x 600	Eloxal/Inox			250
V-8414-70-4	40 x 700	Eloxal/Inox			250

Aluminium Worktop T Lath

V-8415-60-3	30 x 600	Eloxal/Inox			25
V-8415-70-3	30 x 700	Eloxal/Inox			25
V-8415-60-4	40 x 600	Eloxal/Inox			25
V-8415-70-4	40 x 700	Eloxal/Inox			25



Wardrobe Lift

Product Code	Dimension WxDxH (mm)	Color	Basket	Weight (Gr.)	Box
V-8500-120	800 x 1200	Eloxal			1



Cover Lift

Product Code	Dimension WxDxH (mm)	Color	Basket	Weight (Gr.)	Box
V-8501		Grey			1



Plastic Corner Protector

Product Code	Dimension WxDxH (mm)	Color	Basket	Weight (Gr.)	Box
V-6065-3		Black			8000
V-6065-4		Black			8000



Metal Lift With Stopper

Product Code	Dimension WxDxH (mm)	Color	Basket	Weight (Gr.)	Box
V-6063-2		Nickel			50



Lift With Stopper

Product Code	Dimension WxDxH (mm)	C (mm)	Weight (Gr.)	Box
V-6063-3		White/Brown		100



Metal Cradle Mechanism

Product Code	Dimension WxDxH (mm)	Color	Basket	Weight (Gr.)	Box
V-6064-2	M7	Chrome			1



Metal Cradle Mechanism

Product Code	Dimension WxDxH (mm)	Color	Basket	Weight (Gr.)	Box
V-6064-3	M7 (Automat)	Chrome			1
V-6064-4	M8 (Automat)	Chrome			1



Metal Cradle Mechanism

Product Code	Dimension WxDxH (mm)	Color	Basket	Weight (Gr.)	Box
V-6064-4	M8	Chrome			1



Cradle Rocking Apparatus

Product Code	Dimension WxDxH (mm)	C (mm)	Basket	Weight (Gr.)	Box
V-6064-1	154	Black			20
V-6064-2	154	Black			20



Open Round Flange Hanging

Product Code	Dimension WxDxH (mm)	Color	Basket	Weight (Gr.)	Box
V-0214-A	25	Chrome			500



Closed Round Flange Hanging

Product Code	Dimension WxDxH (mm)	Color	Basket	Weight (Gr.)	Box
V-0214-K	25	Chrome			500



Open Oval Flange Hanging

Product Code	Dimension WxDxH (mm)	Color	Basket	Weight (Gr.)	Box
V-0215-A	15 x 30	Chrome			500



Closed Oval Flange Hanging

Product Code	Dimension WxDxH (mm)	Color	Basket	Weight (Gr.)	Box
V-0215-K	15 x 30	Chrome			500

Nut For Cylinder Puller Screw

Product Code	Dimension WxDxH (mm)	Color	Basket	Weight (Gr.)	Box
V-6012-13-C6	(M6) 100 x 130	Zinc			500
V-6012-16-C6	(M6) 100 x 140	Zinc			500
V-6012-13-C5	(M5) 100 x 130	Zinc			500
V-6012-C5	(M5) 100 x 140	Zinc			500



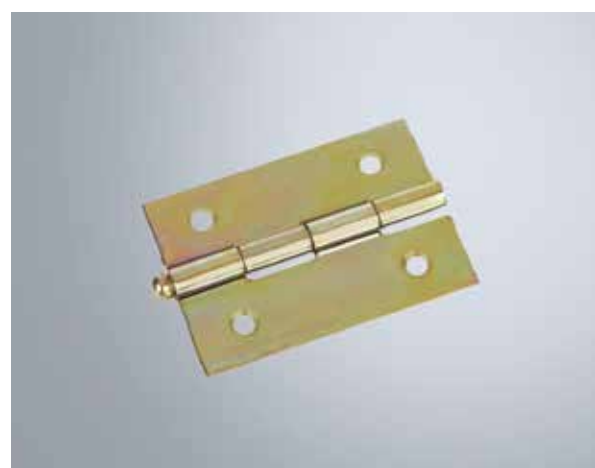
Leaf Hinge

Product Code	Dimension WxDxH (mm)	Color	Basket	Weight (Gr.)	Box
V-0048	35 x 50 x 1	Flashy			1800
V-0049	38 x 60 x 1	Flashy			1200
V-0050	40 x 70 x 1.1	Flashy			768
V-0051	55 x 88 x 1.2	Flashy			528
V-0052	63 x 100 x 1.5	Flashy			384
V-0053	63 x 100 x 2	Flashy			312



Backgammon Hinge

Product Code	Dimension WxDxH (mm)	Color	Basket	Weight (Gr.)	Box
V-0064	37 x 48	Flashy			6000
V-0065	50 x 60	Flashy			6000
V-0066	64 x 87	Flashy			6000



Piano Hinge

Product Code	Dimension WxDxH (mm)	Color	Basket	Weight (Gr.)	Box
V-0067	1750	Yellow		13	50
V-0068	1750	Black		13	50





PVC H Connecting Profile

Product Code	Dimension WxDxH (mm)	Color	Basket	Weight (Gr.)	Box
V-8416-3-4	3-4	Various			300
V-8416-6	6	Various			300
V-8416-8	8	Various			150
V-8416-18	18	Various			150



PVC U Type Edge Cover Profile

Product Code	Dimension WxDxH (mm)	Color	Basket	Weight (Gr.)	Box
V-8417		Grey/Black			150



Oval Flange - Zinc

Product Code	Dimension WxDxH (mm)	Color	Basket	Weight (Gr.)	Box
V-6039-3-Z	15 x 29	Zinc			2000
V-6039-3-N	15 x 29	Nickel			2000



Oval Flange - Plastic

Product Code	Dimension WxDxH (mm)	Color	Basket	Weight (Gr.)	Box
V-6039-5-Z	15 x 29	Various			5000



Oval Flange Without Pin (Metal)

Product Code	Dimension WxDxH (mm)	Color	Basket	Weight (Gr.)	Box
V-6039-5-Z	15 x 29	Zinc			2000
V-6039-5-N	15 x 29	Nickel			2000



Round Flange With Screw

Product Code	Dimension WxDxH (mm)	Color	Basket	Weight (Gr.)	Box
V-6037-V	Ø 25	Chrome			2000

Round Flange Without Screw

Product Code	Dimension WxDxH (mm)	Color	Basket	Weight (Gr.)	Box
V-6038-V	Ø 25	Chrome			2000



Round Flange With Plastic Base

Product Code	Dimension WxDxH (mm)	Color	Basket	Weight (Gr.)	Box
V-6043-V	Ø 25	Chrome			2000



Round Flange With Metal Base

Product Code	Dimension WxDxH (mm)	Color	Basket	Weight (Gr.)	Box
V-6044-V	Ø 25	Chrome			1200



Four - Hole Oval Flange Without Pin (Metal)

Product Code	Dimension WxDxH (mm)	Color	Basket	Weight (Gr.)	Box
V-6039-5-FZ	15 x 29	Zinc			2000
V-6039-5-FC	15 x 29	Chrome			2000





Two - Hole Oval Flange Without Pin (Metal)

Product Code	Dimension WxDxH (mm)	Color	Basket	Weight (Gr.)	Box
V-6039-5-TZ	15 x 29	Zinc			3000
V-6039-5-TC	15 x 29	Chrome			3000



Door Stopper

Product Code	Dimension WxDxH (mm)	Color	Basket	Weight (Gr.)	Box
V-7010-35	35	Chrome			370
V-7010-50	50	Chrome			250



Metal Shelf Support With Rubber Gasket

Product Code	Dimension WxDxH (mm)	Color	Basket	Weight (Gr.)	Box
V-6006-15	8 x 20	Nickel			1000
V-6006-19	8 x 18.5	Nickel			1000
V-6006-20	6.5 x 20	Nickel			1000



Metal Shelf Support With Rubber Gasket

Product Code	Dimension WxDxH (mm)	Color	Basket	Weight (Gr.)	Box
V-6006-17	10 x 15	Chrome			250
V-6006-17	12 x 22.5	Chrome			250
V-6006-18	14 x 20	Nickel			100
V-6006-18	12 x 18	Nickel			100
V-6006-18	10 x 15	Nickel			100

Metal Shelf Support With Rubber Gasket

Product Code	Dimension WxDxH (mm)	C (mm)	Basket	Weight (Gr.)	Box
V-6006-16	6.5 x 20	Nickel			1000



Metal Shelf Support

Product Code	Dimension WxDxH (mm)	Color	Basket	Weight (Gr.)	Box
V-6006-21	6.5 x 20	Nickel			1000



Adjustable Glass Shelf Holder

Product Code	Dimension WxDxH (mm)	Color	Basket	Weight (Gr.)	Box
V-6003-10	Max. 20	Chrome			250
V-6003-10	Max. 20	Matt Chrome			250
V-6003-10	Max. 20	Satin			250



Glass Shelf Holder With Plastic and Metal Dowel

Product Code	Dimension WxDxH (mm)	Color	Basket	Weight (Gr.)	Box
V-6009-02-P		Chrome			2000
V-6009-02-M		Chrome			2000





Glass Shelf Holder With Plastic and Metal Dowel & Pin

Product Code	Dimension WxDxH (mm)	Color	Basket	Weight (Gr.)	Box
V-6009-02-P		Chrome			2000
V-6009-02-M		Chrome			2000



Glass Shelf Holder - Big

Product Code	Dimension WxDxH (mm)	Color	Basket	Weight (Gr.)	Box
V-6001-01-42		Chrome			1000
V-6001-01-51		Matt Chrome			1000
V-6001-01-60		Satin			1000



Glass Shelf Holder - Small

Product Code	Dimension WxDxH (mm)	Color	Basket	Weight (Gr.)	Box
V-6002-01-42		Chrome			500
V-6002-01-51		Matt Chrome			500
V-6002-01-50		Satin			500



Hidden Shelf Support

Product Code	Dimension WxDxH (mm)	Color	Basket	Weight (Gr.)	Box
SCA-6004-1014	10 x 14	Zinc			100
SCA-6004-1010	10 x 10	Zinc			100
SCA-6004-0814	8 x 14	Zinc			100
SCA-6004-0810	8 x 10	Zinc			100



Crystal Shelf Support

Product Code	Dimension WxDxH (mm)	Color	Basket	Weight (Gr.)	Box
V-6007-1	5	Transparent			10000



Glass Shelf Support With Rubber Suction Cap

Product Code	Dimension WxDxH (mm)	Color	Basket	Weight (Gr.)	Box
V-6007-2	5	Nickel			5000



Glass Shelf Support With Rubber Suction Cap

Product Code	Dimension WxDxH (mm)	Color	Basket	Weight (Gr.)	Box
V-6007-3	5	Nickel			5000



Metal Shelf Support

Product Code	Dimension WxDxH (mm)	Color	Basket	Weight (Gr.)	Box
V-6007-5	5	Zinc			5000



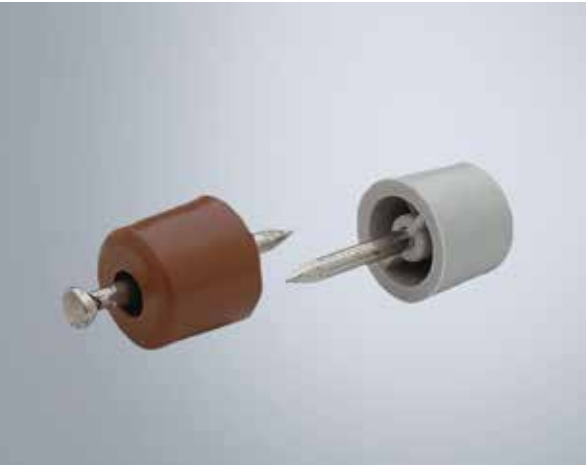
Metal Shelf Support

Product Code	Dimension WxDxH (mm)	Color	Basket	Weight (Gr.)	Box
V-6007-6	5	Zinc			5000



Metal Shelf Support With Dowel - Oval

Product Code	Dimension WxDxH (mm)	Color	Basket	Weight (Gr.)	Box
V-6007-15	5	Nickel			5000



Plastic Shelf Support With Nail

Product Code	Dimension WxDxH (mm)	Color	Basket	Weight (Gr.)	Box
V-6007-6	Small	Various			25000
V-6007-7	Big	Various			20000



Plastic Shelf Support With Dowel

Product Code	Dimension WxDxH (mm)	Color	Basket	Weight (Gr.)	Box
V-6008-15	5	Various			15000



Fixed Nail Plug With Nail

Product Code	Dimension WxDxH (mm)	Color	Basket	Weight (Gr.)	Box
V-6049-PV		Various			25000
V-6049-PT		Transparent			25000



Metal Shelf Support With Dowel

Product Code	Dimension WxDxH (mm)	Color	Basket	Weight (Gr.)	Box
V-6007-10	5	Zinc			10000

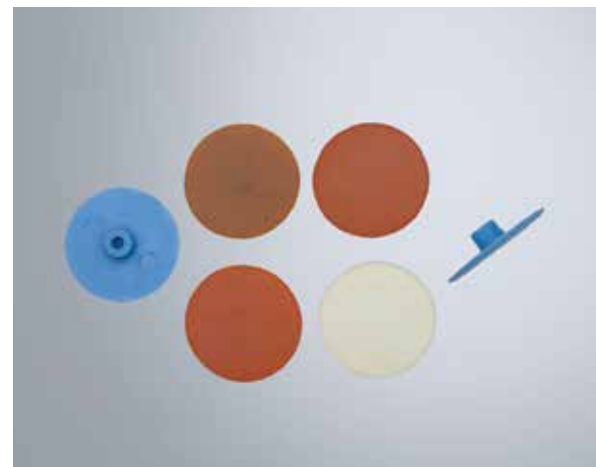
Metal Cap For Mirror Screw

Product Code	Dimension WxDxH (mm)	Color	Basket	Weight (Gr.)	Box
V-6005-13	13	Chrome			10000
V-6005-15	15	Chrome			5000
V-6005-20	20	Chrome			2500
V-6005-25	25	Chrome			2000
V-6005-30	30	Chrome			1000



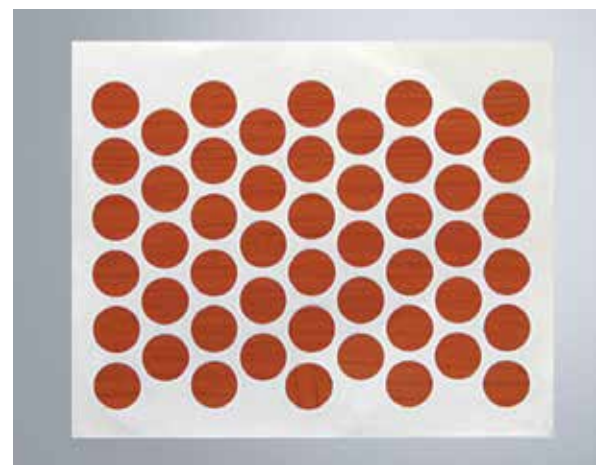
Plastic Cap For Minifix Head

Product Code	Dimension WxDxH (mm)	Color	Basket	Weight (Gr.)	Box
V-6052		Various			50000



Screw Cap

Product Code	Dimension WxDxH (mm)	Color	Basket	Weight (Gr.)	Box
V-1450	14	Solid			50
V-1825	18	Solid			50



Round Felt

Product Code	Dimension WxDxH (mm)	Color	Basket	Weight (Gr.)	Box
V-5020	20	Brown			50
V-3224	24	Brown			50
V-2828	28	Brown			50
V-1830	30	Brown			50
V-1835	35	Brown			50
V-1140	40	Brown			50
V-1045	45	Brown			50
V-0850	50	Brown			50
V-0855	55	Brown			50





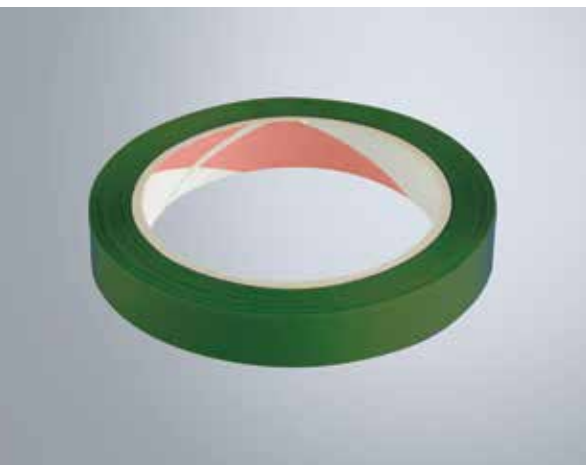
Square Felt

Product Code	Dimension WxDxH (mm)	Color	Basket	Weight (Gr.)	Box
V-4022	20 x 20	Brown			50
V-3225	25 x 50	Brown			50
V-1833	30 x 30	Brown			50
V-1834	35 x 35	Brown			50
V-1044	40 x 40	Brown			50
V-0854	50 x 50	Brown			50
V-1235	35 x 50	Brown			50
V-0549 4	0 x 90	Brown			50



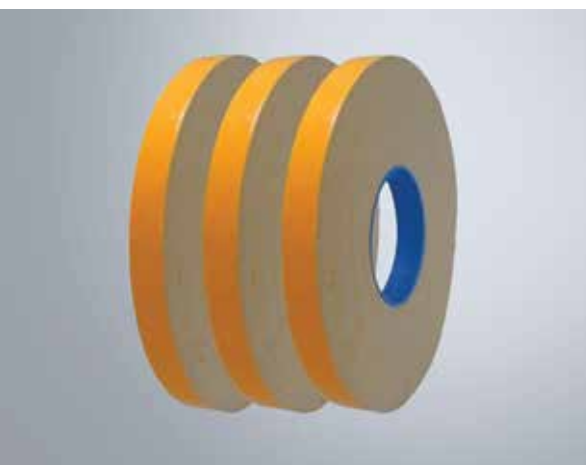
Double Sided Adhesive Tape

Product Code	Dimension WxDxH (mm)	Color	Basket	Weight (Gr.)	Box
V-PE127-05	19 x 5 m	Red			96
V-PE127-10	19 x 10 m	Red			96
V-PE127-20	19 x 25 m	Red			96



Double Sided Adhesive Tape

Product Code	Dimension WxDxH (mm)	Color	Basket	Weight (Gr.)	Box
V-PE128-05	19 x 5 m	Green			96
V-PE128-10	19 x 10 m	Green			96
V-PE128-20	19 x 25 m	Green			96

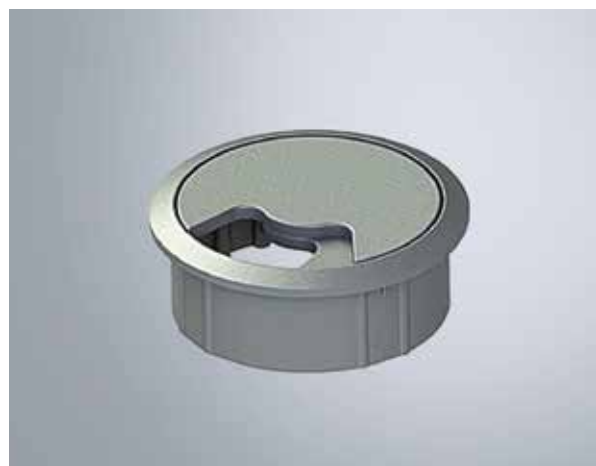


Double Sided Adhesive Tape

Product Code	Dimension WxDxH (mm)	Color	Basket	Weight (Gr.)	Box
V-PE129-05	19 x 5 m	Yellow			96
V-PE129-10	19 x 10 m	Yellow			96
V-PE129-20	19 x 25 m	Yellow			96

Plastic Cable Guide

Product Code	Dimension WxDxH (mm)	Color	Basket	Weight (Gr.)	Box
V-6066-8-PV	60	Various			600





BELLAKS

4. FITTINGS



Complete easy access to your systems



Minifix Cam

Product Code	Dimension WxDxH (mm)	Color	Basket	Weight (Gr.)	Box
F-6035-16-C	12 x 15	Zinc			2000
F--6035-18-C	13.3 x 15	Zinc			2000



Minifix Axle - Self Tapping

Product Code	Dimension WxDxH (mm)	Color	Basket	Weight (Gr.)	Box
F-6134-S	34	Zinc			2000



Minifix Axle - Metric

Product Code	Dimension WxDxH (mm)	Color	Basket	Weight (Gr.)	Box
F-6134-M	34	Zinc			2000



Minifix Axle - Self Tapping

Product Code	Dimension WxDxH (mm)	Color	Basket	Weight (Gr.)	Box
F-6124-S	24	Zinc			2000

Minifix Axle - Metric

F-6134-M	34	Zinc			2000
----------	----	------	--	--	------

Minifix Set (Self Tapping)

Product Code	Dimension WxDxH (mm)	Color	Basket	Weight (Gr.)	Box
F-6031-12-C	12 x 15	Zinc			2000
F-6031-13-C	13,3 x 15	Zinc			2000



Minifix Set With Plastic Dowel

Product Code	Dimension WxDxH (mm)	Color	Basket	Weight (Gr.)	Box
F-6030-12-P-C	12 x 15	Zinc			2000
F-6030-13-P-C	13,3 x 15	Zinc			2000



Minifix Set With Plastic Dowel

Product Code	Dimension WxDxH (mm)	Color	Basket	Weight (Gr.)	Box
F-6030-12-M-C	12 x 15	Zinc			2000
F-6030-13-M-C	13,3 x 15	Zinc			2000



Plastic Self - Doweled Minifix Axle

Product Code	Dimension WxDxH (mm)	Color	Basket	Weight (Gr.)	Box
F-6032-08	M8	White/Zinc			2000
F-6032-10	M10	White/Zinc			2000





Metal Dowel

Product Code	Dimension WxDxH (mm)	Color	Basket	Weight (Gr.)	Box
F-6034-0610	8 x 10	Zinc			1000
F-6034-0613	8 x 13	Zinc			1000
F-6034-0812	10 x 12	Zinc			1000
F-6034-0815	10 x 15	Zinc			1000
F-6034-0820	10 x 20	Zinc			1000



Plastic Dowel

Product Code	Dimension WxDxH (mm)	Color	Basket	Weight (Gr.)	Box
F-6066-8-P	8 x 11	Yellow			1000
F-6066-11-P	10 x 11	Yellow			1000
F-6066-13-P	10 x 13	Yellow			1000



Angled Minifix Axle

Product Code	Dimension WxDxH (mm)	Color	Basket	Weight (Gr.)	Box
F-6029	44 x 44 x Ø 6	Zinc			1000



Minifix Axle

Product Code	Dimension WxDxH (mm)	C (mm)	Basket	Weight (Gr.)	Box
F-6028-68	Ø 7 x 68	Zinc			1000
F-6028-82	Ø 7 x 82	Zinc			1000
F-6028-85	Ø 7 x 86	Zinc			1000

Badroom Cabinet Hanger

Product Code	Dimension WxDxH (mm)	Color	Basket	Weight (Gr.)	Box
F-0206	2,5	Zinc			20



Metal Bed Connector

Product Code	Dimension WxDxH (mm)	Color	Basket	Weight (Gr.)	Box
F-6065-14	2	Zinc			100



Bed Fitting With Plastic Dowel

Product Code	Dimension WxDxH (mm)	Color	Basket	Weight (Gr.)	Box
F-6061-12-S	1,2	Zinc			100
F-6061-15-S	1,5	Zinc			100



Bed Fitting

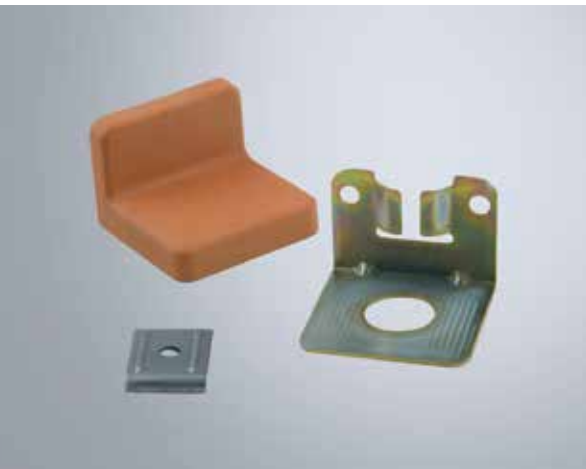
Product Code	Dimension WxDxH (mm)	Color	Basket	Weight (Gr.)	Box
F-6061-12-P	1,2	Zinc			600
F-6061-15-P	1,5	Zinc			500





Metal Butterfly Connector

Product Code	Dimension WxDxH (mm)	Color	Basket	Weight (Gr.)	Box
F-6011-01		Zinc			1000
F-6011-02		Nickel			1000
F-6011-03		Transparent			1000



Cabinet Hanger

Product Code	Dimension WxDxH (mm)	Color	Basket	Weight (Gr.)	Box
F-6038-12	1,2	Various			250
F-6038-15	1,5	Various			250



Metal L Connector Oval

Product Code	Dimension WxDxH (mm)	Color	Basket	Weight (Gr.)	Box
F-6067	2 x 23 x 30 x 30	Zinc			1000
F-6067-2	2 x 17 x 30 x 30	Zinc			1000
F-6068	2 x 17 x 60	Zinc			1000
F-6068-2	2 x 23 x 60	Zinc			1000

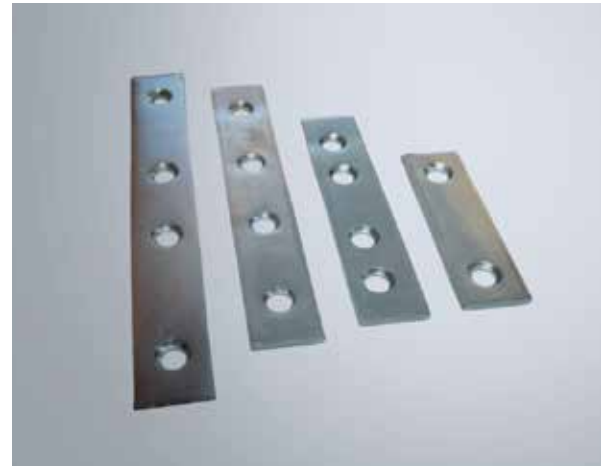


Metal L Connector

Product Code	Dimension WxDxH (mm)	Color	Basket	Weight (Gr.)	Box
F-0150	2 x 15 x 25 x 25	Zinc			1000
F-0151	2 x 15 x 35 x 35	Zinc			1000
F-0152	2 x 15 x 45 x 45	Zinc			1000
F-0153	2 x 15 x 55 x 55	Zinc			1000
F-0154	2 x 15 x 65 x 65	Zinc			1000
F-0155	2 x 15 x 75 x 75	Zinc			1000
F-0215	2 x 16 x 55 x 110	Zinc			500

Metal Flat Connector

Product Code	Dimension WxDxH (mm)	Color	Basket	Weight (Gr.)	Box
F-0160	2 x 15 x 50	Zinc			2000
F-0161	2 x 15 x 70	Zinc			1000
F-0162	2 x 15 x 90	Zinc			1000
F-0163	2 x 15 x 110	Zinc			1000
F-0164	2 x 15 x 130	Zinc			1000
F-0165	2 x 15 x 150	Zinc			1000
F-0224	2 x 16 x 165	Zinc			500
F-0216	2 x 20 x 50	Zinc			1000
F-0217	2 x 20 x 60	Zinc			1000
F-0218	2 x 20 x 70	Zinc			1000
F-0219	2 x 20 x 90	Zinc			1000
F-0220	2 x 20 x 110	Zinc			1000
F-0221	2 x 20 x 130	Zinc			1000
F-0222	2 x 20 x 150	Zinc			500
F-0223	2 x 20 x 170	Zinc			500
F-0224	2 x 20 x 190	Zinc			500
F-0225	2 x 25 x 70	Zinc			1000
F-0226	2 x 25 x 100	Zinc			1000
F-0227	2 x 30 x 50	Zinc			1000
F-0228	2 x 30 x 70	Zinc			1000
F-0229	2 x 30 x 90	Zinc			1000
F-0230	2 x 35 x 100	Zinc			500
F-0231	2 x 40 x 100	Zinc			500
F-0232	2,5 x 40 x 90	Zinc			500
F-0233	2,5 x 55 x 150	Zinc			100
F-0234	2,5 x 55 x 200	Zinc			100



Metal L Connector

Product Code	Dimension WxDxH (mm)	Color	Basket	Weight (Gr.)	Box
F-0207	2 x 20 x 25 x 25	Zinc			1000
F-0133	2 x 20 x 30 x 30	Zinc			1000
F-0208	2 x 20 x 35 x 35	Zinc			1000
F-0209	2 x 20 x 45 x 45	Zinc			1000
F-0210	2 x 20 x 55 x 55	Zinc			1000
F-0211	2 x 20 x 65 x 65	Zinc			1000
F-0212	2 x 20 x 75 x 75	Zinc			500
F-0213	2 x 20 x 85 x 85	Zinc			500
F-0214	2 x 20 x 95 x 95	Zinc			500
F-0135	2 x 25 x 35 x 35	Zinc			1000
F-0137	2 x 25 x 50 x 50	Zinc			1000
F-0184	2 x 30 x 25 x 25	Zinc			1000
F-0185	2 x 30 x 35 x 35	Zinc			1000
F-0186	2 x 30 x 45 x 45	Zinc			1000
F-0192	2 x 35 x 50 x 50	Zinc			500





Metal L Connector

Product Code	Dimension WxDxH (mm)	Color	Basket	Weight (Gr.)	Box
F-0194	2 x 40 x 50 x 50	Zinc			500
F-0179	2,5 x 40 x 45 x 45	Zinc			500
F-0174	2,5 x 55 x 75 x 75	Zinc			100
F-0176	2,5 x 55 x 100 x 100	Zinc			100
F-0178	2,5 x 55 x 50 x 150	Zinc			100



Metal Corner Table Apparatus Without Pin

Product Code	Dimension WxDxH (mm)	Color	Basket	Weight (Gr.)	Box
F-0204	2 x 86 x 42 x 56 x 56	Zinc			100
F-0205	2 x 86 x 42 x 56 x 56	Zinc			100



Plastic Corner Connector

Product Code	Dimension WxDxH (mm)	Color	Basket	Weight (Gr.)	Box
F-6066-2-PV		Various			2400



Plastic Corner Connector

Product Code	Dimension WxDxH (mm)	Color	Basket	Weight (Gr.)	Box
F-6066-3-PV		Various			5000

Plastic L Corner Connector

Product Code	Dimension WxDxH (mm)	Color	Basket	Weight (Gr.)	Box
F-6066-5-PV		Various			3000



Base Plate For Cabinet

Product Code	Dimension WxDxH (mm)	Color	Basket	Weight (Gr.)	Box
F-6066-1-PV	54 x 16	Various			5000



Plastic Dowel

Product Code	Dimension WxDxH (mm)	Color	Basket	Weight (Gr.)	Box
F-6045-05	8 x 30	Various			3000



Wooden Dowel

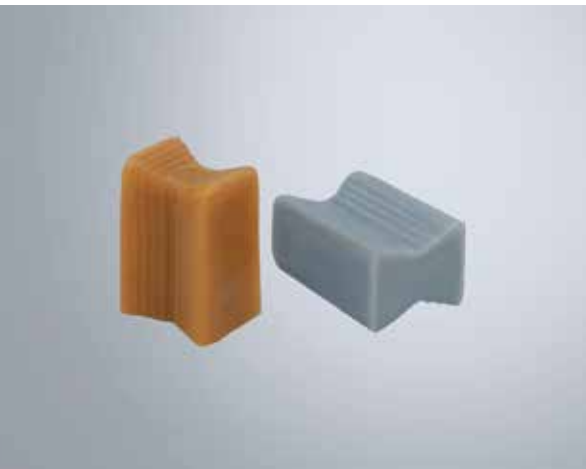
Product Code	Dimension WxDxH (mm)	Color	Basket	Weight (Gr.)	Box
F-6045-30	8 x 30	Wooden			2500
F-6045-35	8 x 35	Wooden			2500
F-6045-40	8 x 40	Wooden			2500





H Cabinet Door Frame Connection Part

Product Code	Dimension WxDxH (mm)	Color	Basket	Weight (Gr.)	Box
F-6046-11	11	Various			2500
F-6046-14	14	Various			2500



Cabinet Door Frame Connection Part

Product Code	Dimension WxDxH (mm)	Color	Basket	Weight (Gr.)	Box
F-6047		Various			2500



Plastic Back Supporter

Product Code	Dimension WxDxH (mm)	Color	Basket	Weight (Gr.)	Box
F-6048		Various			2500



Shoe Rack

Product Code	Dimension WxDxH (mm)	Color	Basket	Weight (Gr.)	Box
F-6066-10-PV		Various			50





BELLAKS

5. COLOR ACCESSORIES



Plastic Colors



Epoxy and Coated Colors



PVC Water Colors





BELLAKS

Zafer Mahallesi, 147. Sokak, No 9-13/A Esenyurt - İstanbul - Türkiye
www.bellaks.com info@bellaks.com